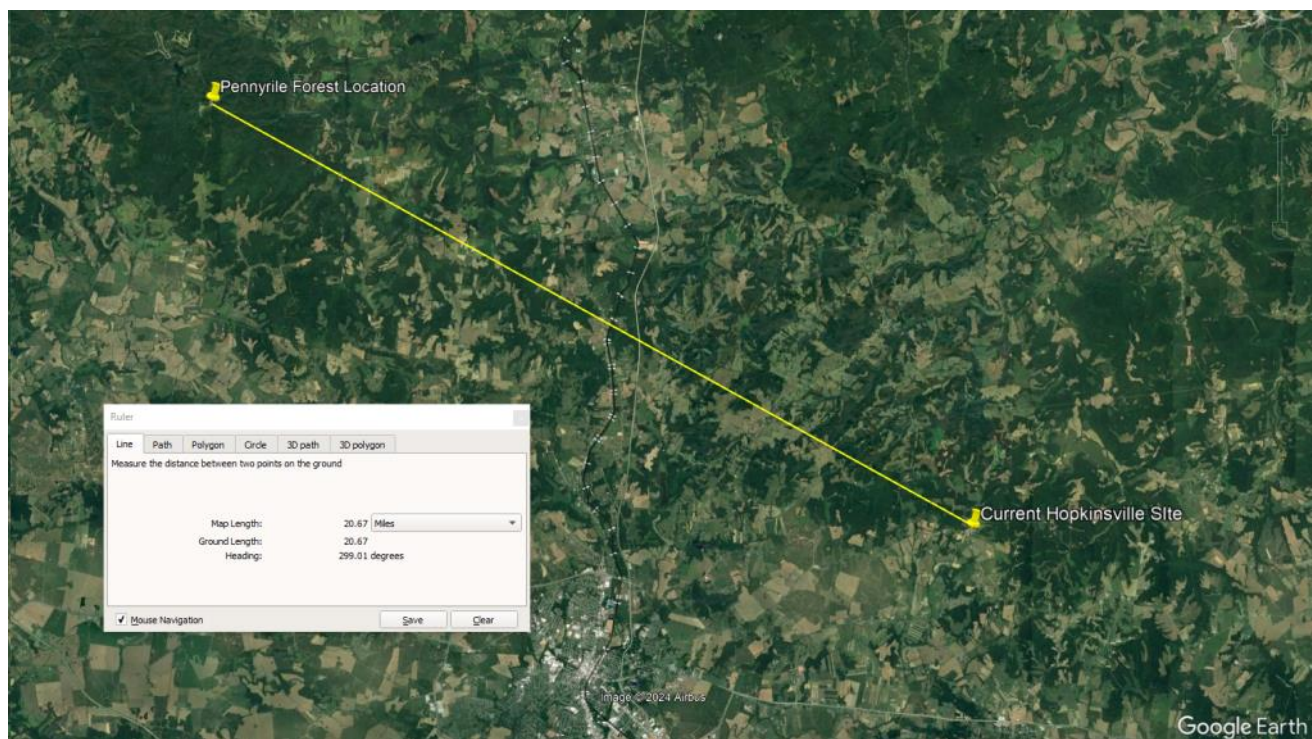


Kentucky Annual Ambient Air Monitoring Network Plan 2024 Addendum

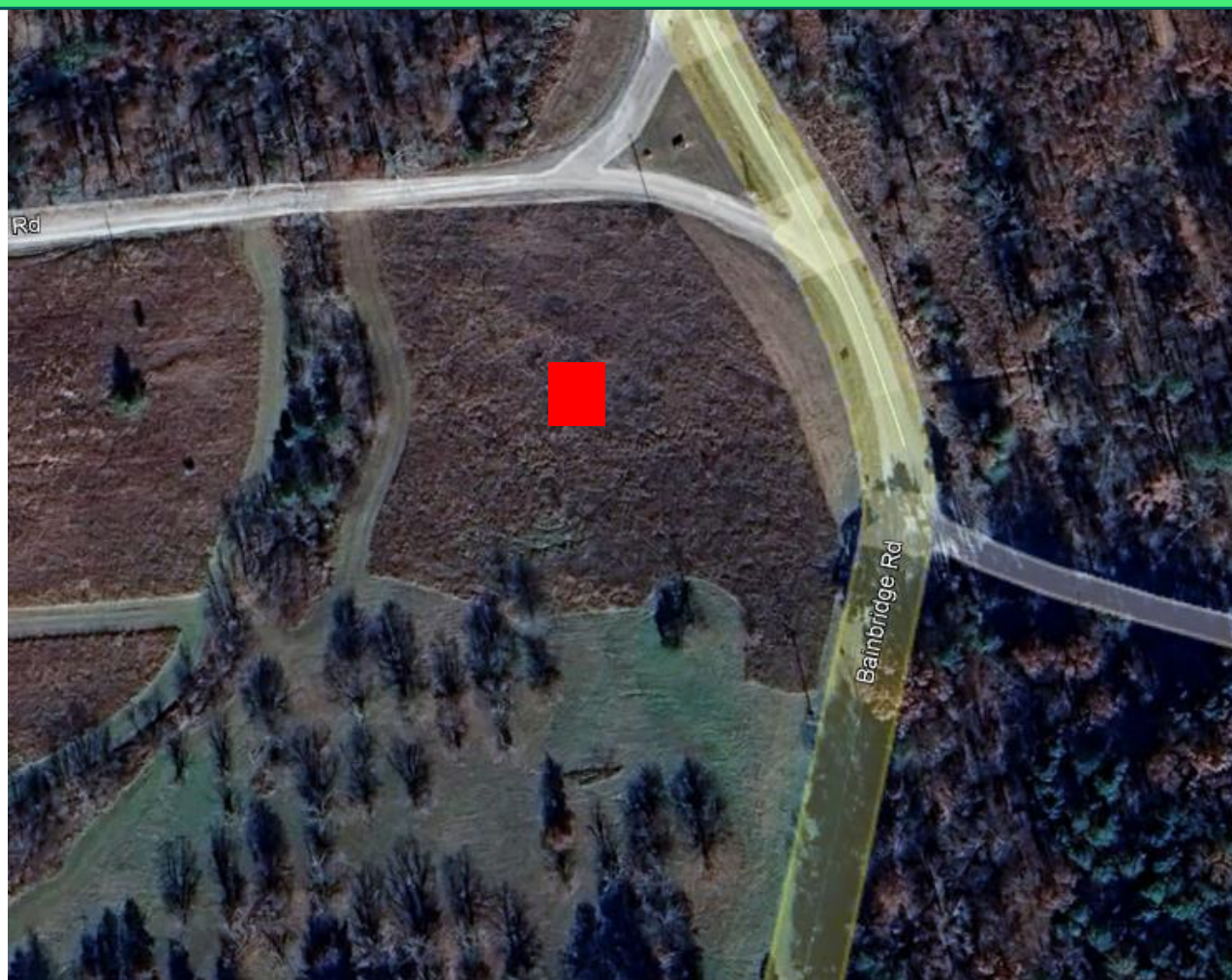
The Hopkinsville air monitoring site (21-047-0006), located in Christian County, must be re-located due to increased traffic on an adjacent dirt road causing elevated PM values, and is likely no longer representative of the ambient air for the site. The Kentucky Division for Air Quality (KDAQ) is in discussion with the Kentucky Division of Forestry (KDF) to secure a location on the Pennyryle State Forest, located on Pennyryle State Park Forest Road in northwestern Christian County, south of the Pennyryle State Resort Park. The site is located in a field at the corners of Bainbridge Rd and the Pennyryle Forest State Park Road. The address of the KY Department of Forestry maintenance facility, located down the road approximately 0.25 mile, is 20781 Pennyryle Forest State Park Road.

The existing site at Hopkinsville will be maintained until the new site is established, unless the situation at the existing site changes in the future. The new site will continue to monitor ozone and particulate matter (FEM continuous monitor, $PM_{2.5}$).



Google Earth image showing the distance and direction between the existing Hopkinsville site and the new proposed Pennyryle Forest site.

Kentucky Annual Ambient Air Monitoring Network Plan 2024 Addendum



The proposed station location is represented by the red rectangle in the above image. The inlets will be roughly 42 m from the tree line west of the site, 32 m from the tree line south of the site, 73 meters from the eastern tree line, and 71 meters from the northern trees. The row of trees to the west are up to 22 m in height, the trees to the south range up to 16 m in height, to the west trees are up to 16 m, and to the north the tallest tree is approx. 26 m in height. After measuring the closest trees in the field, DAQ has discussed removal, by KDF, of the tallest trees that may affect siting in the future.

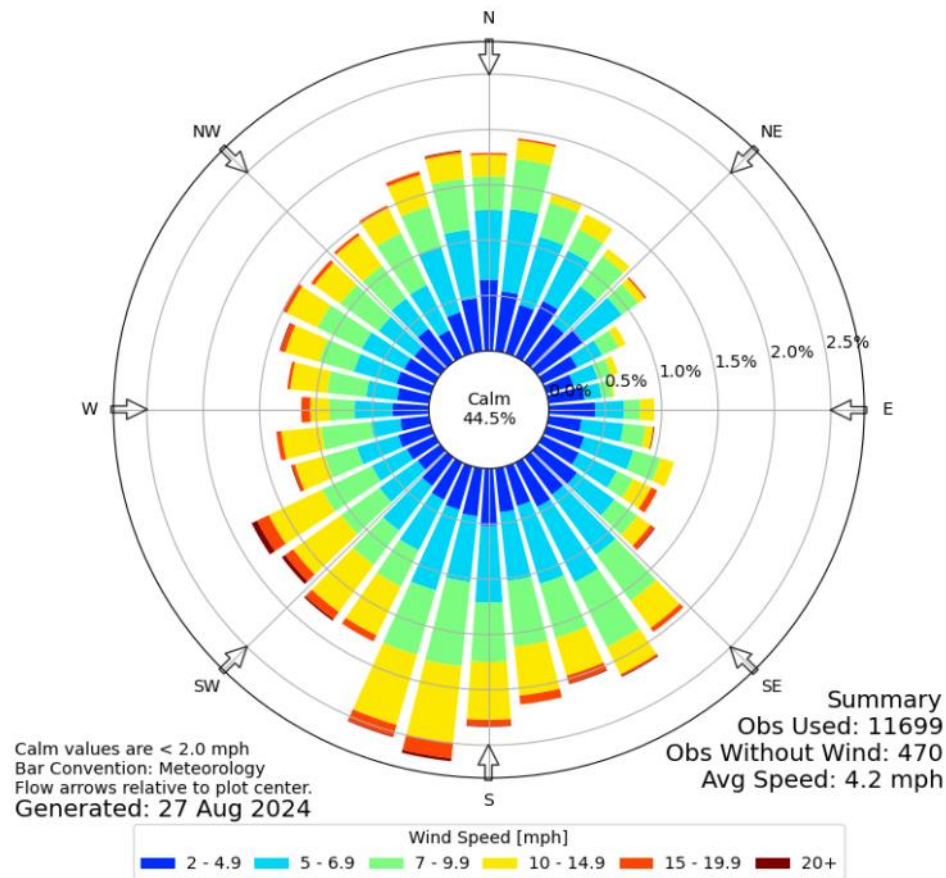
The ozone probe inlet height will be located approximately 3.7 m from ground level; the FEM 2.5 probe inlet height will be located approximately 4.6 m from ground level.

The closest, paved road is Bainbridge Rd, approx. 57 m from the location of the inlets, with an annual average daily traffic of 99. The Pennyryle State Park Road is a gravel road, with traffic confined to Forestry personnel and occasional community members pulling horse trailers.

Kentucky Annual Ambient Air Monitoring Network Plan 2024 Addendum



Windrose Plot for [HVC] Hopkinsville
Obs Between: 26 Apr 2023 08:55 AM - 26 Aug 2024 11:55 PM America/Chicago

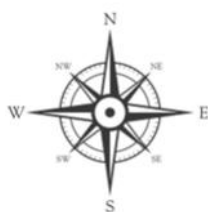


Wind rose obtained from https://www.mesonet.agron.iastate.edu/sites/dyn_windrose.phtml?station=OWB&network=KY_ASOS

A wind rose for the Hopkinsville/Christian County area was created using Iowa Environmental Mesonet (IEM) custom wind roses. It shows a predominantly south/southwest wind. It is the closest station to the proposed Pennyrile site.

Kentucky Annual Ambient Air Monitoring Network Plan 2024 Addendum

Approximate
Cardinal
Directions



Kentucky Annual Ambient Air Monitoring Network Plan 2024 Addendum

CSA/MSA: Clarksville, TN-KY MSA

401 KAR 50:020 Air Quality Region: Paducah-Cairo Interstate (072)

Site Name: Pennyrile Forest (replacing Hopkinsville)

AQS Site ID: 21-047-0007 (new site ID to be established)

Location: Pennyrile Forest State Park Road and Bainbridge Rd/KY 42408, Dawson Springs

County: Christian

GPS Coordinates: 37.05778 -87.65000 (NAD 83)

Date Established: TBD

Inspection Date: TBD

Inspection By: TBD

Site Approval Status: TBD



The monitoring site will be a stationary equipment shelter located in a field on Pennyrile State Forest property. A gravel access road may be constructed to allow for installment of the concrete pad and shelter. A security gate may be installed at the entrance of the gravel road, if necessary. The field will be regularly mowed by KDF.

Monitoring Objective:

The monitoring objectives are to determine compliance with National Ambient Air Quality Standards and to determine levels of interstate regional transport of fine particulate matter and ozone.

Monitors				
Monitor Type	Inlet Height (meters)	Designation	Analysis Method	Frequency of Sampling
AEM Ozone	TBD	SLAMS AQI Maximum O ₃ transport	UV Photometry	Continuously March 1 – October 31
FEM PM _{2.5} Continuous	TBD	SLAMS AQI Transport	Broadband Spectroscopy	Continuously

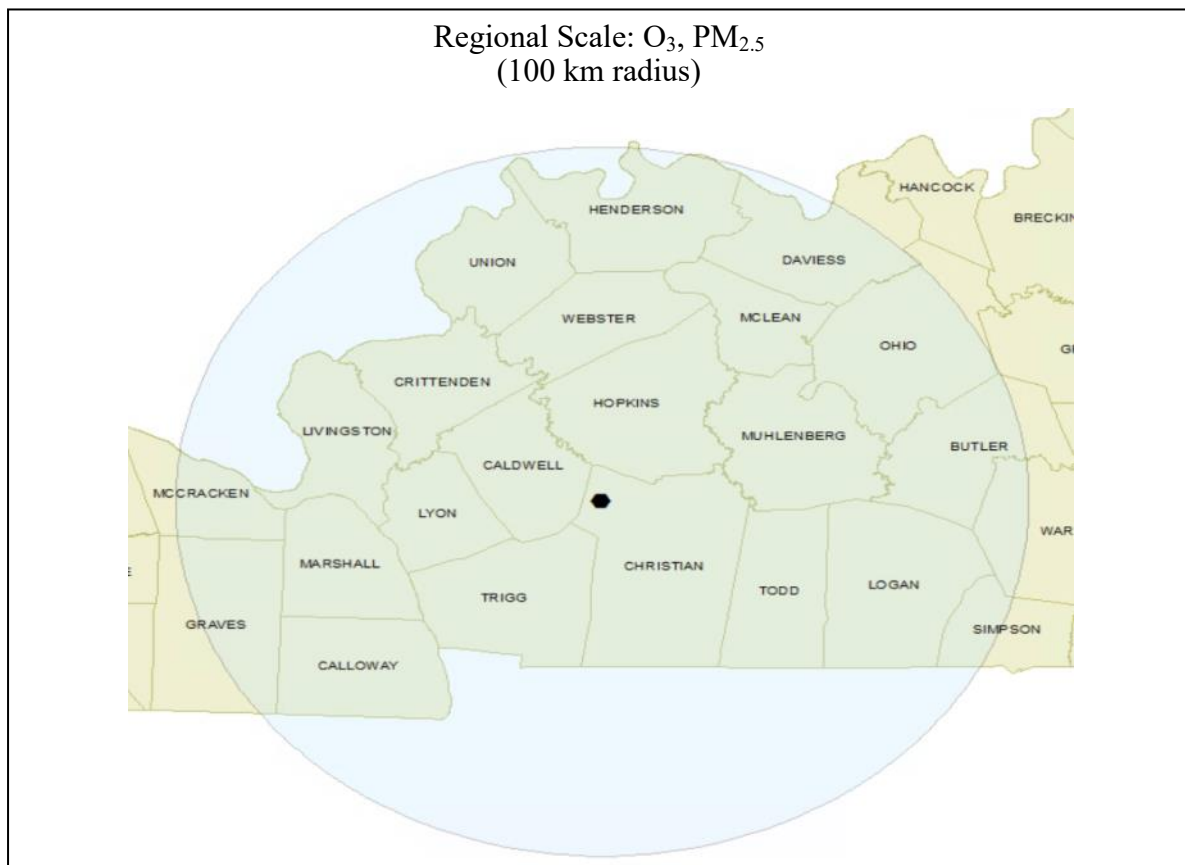
Kentucky Annual Ambient Air Monitoring Network Plan 2024 Addendum

Quality Assurance Status:

All Quality Assurance procedures will be implemented in accordance with 40 CFR 58, Appendix A.

Area Representativeness:

As with the old site of Hopkinsville, the new proposed site will represent population exposure on a regional scale for ozone and PM_{2.5}.



Kentucky Annual Ambient Air Monitoring Network Plan 2024 Addendum

NOTICE OF PUBLIC COMMENT PERIOD KENTUCKY DIVISION FOR AIR QUALITY AMBIENT AIR MONITORING NETWORK 2024 ADDENDUM

In accordance with 40 C.F.R. 58.10(a)(1), the Kentucky Energy and Environment Cabinet will make the annual monitoring network plan addendum available for public inspection for at least 30 days prior to submission to the U.S. EPA. The annual monitoring network plan addendum details the operation and location of one ambient air monitor operated by the Kentucky Division for Air Quality.

The Kentucky Division for Air Quality is proposing a modification to the 2024 annual monitoring network plan, which was originally published for a 30 day comment period on May 22, 2024, and subsequently submitted to the U.S. EPA on July 1, 2024.

The public comment period relating to the proposed addendum will begin **October 28, 2024** and will conclude on **November 26, 2024**. Copies of the annual monitoring plan and this addendum are available for public inspection at the locations listed below. Any individual requiring copies may submit a request to the Division for Air Quality in writing, by telephone, or by electronic mail. Requests for copies should be directed to the contact person. In addition, an electronic version of the proposed annual monitoring network plan and relevant attachments can be downloaded from the Division for Air Quality's website at:

<https://eec.ky.gov/Environmental-Protection/Air/Pages/Public-Notices.aspx>

To be considered part of the record, comments must be received by **November 26, 2024**. Comments should be sent directly to the contact person.

CONTACT PERSON: Ms. Lisa Hicks, Environmental Scientist, Division for Air Quality, 300 Sower Boulevard, 2nd Floor, Frankfort, Kentucky 40601. Phone: (502) 782-6972; Email: lisa.hicks@ky.gov.

The Energy and Environment Cabinet does not discriminate on the basis of race, color, national origin, sex, age, religion, or disability and provides, upon request, reasonable accommodation including auxiliary aids and services necessary to afford an individual with a disability an equal opportunity to participate in all services, programs, and activities.

LMAPCD
701 W. Ormsby Ave., Suite 303
Louisville, KY 40203

Ashland Regional Office
1550 Wolohan Drive, Suite 1
Ashland, KY 41102

Bowling Green Regional Office
2642 Russellville Road
Bowling Green, KY 42101

Frankfort Regional Office
300 Sower Boulevard, 1st Floor
Frankfort, KY 40601

Hazard Regional Office
1332 S. KY Hwy 115, Suite 100
Hazard, KY 41701

London Regional Office
875 S. Main Street
London, KY 40741

Paducah Regional Office
130 Eagle Nest Drive
Paducah, KY 42003

Florence Regional Office
8020 Veterans Mem Dr., Suite 110
Florence, KY 41042

Owensboro Regional Office
3032 Alvey Park Dr., Suite 700
Owensboro, KY 42303

Kentucky Annual Ambient Air Monitoring Network Plan 2024 Addendum

Notice of Findings for the Public Comment Period

**Kentucky Division for Air Quality
Ambient Air Monitoring Network**

**Energy and Environment Cabinet
Department for Environmental Protection**

A public comment period on an addendum to the KENTUCKY DIVISION FOR AIR QUALITY AMBIENT AIR MONITORING NETWORK PLAN 2024 was held from November 1, 2024 – November 30, 2024.

No comments were received during the public comment period.